

Scale and arpeggio patterns

The examples below clarify patterns found in this syllabus. The full requirements for Tuned Percussion and Percussion (Combined) at each grade are listed on the relevant syllabus pages. See also pages 17–18.

SCALES

one octave (and similarly, two octaves)



ARPEGGIOS

one octave (and similarly, two octaves)



CHROMATIC SCALES

one octave (and similarly, two octaves)



DOMINANT SEVENTHS (resolving on tonic)

one octave (and similarly, two octaves)



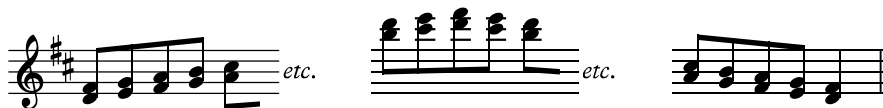
DIMINISHED SEVENTH

one octave (and similarly, two octaves)



SCALES IN THIRDS

two octaves



SCALES IN OCTAVES

one octave



SCALES IN SIXTHS

one octave



BROKEN CHORDS

two octaves



SCALES IN BROKEN THIRDS

two octaves



CHROMATIC SCALES IN MINOR THIRDS

two octaves



CHROMATIC SCALES IN BROKEN MINOR THIRDS

two octaves



WHOLE-TONE SCALES

two octaves



Scale and arpeggio speeds

The following speeds are given as a general guide:

Grade/Speed *		1	2	3	4	5	6	7	8
Scales		♩ = 69	♩ = 80	♩ = 88	♩ = 100	♩ = 112			
Arpeggios		♩ = 100	♩ = 120	♩ = 50	♩ = 56	♩ = 60			
Chromatic scales				♩ = 88	♩ = 100	♩ = 112	♩ = 120		
Dom. & Dim. 7ths					♩ = 88	♩ = 96	♩ = 112	♩ = 120	♩ = 140
Scales in 3rds/broken 3rds, 6ths, 8ves & whole-tone scales							♩ = 92	♩ = 126	♩ = 138
Broken chords							♩ = 112	♩ = 160	♩ = 200
Chromatic scales in minor 3rds/ broken minor 3rds								♩ = 100	♩ = 120

* All speeds relate to the rhythmic grouping , except for arpeggios, where  applies.